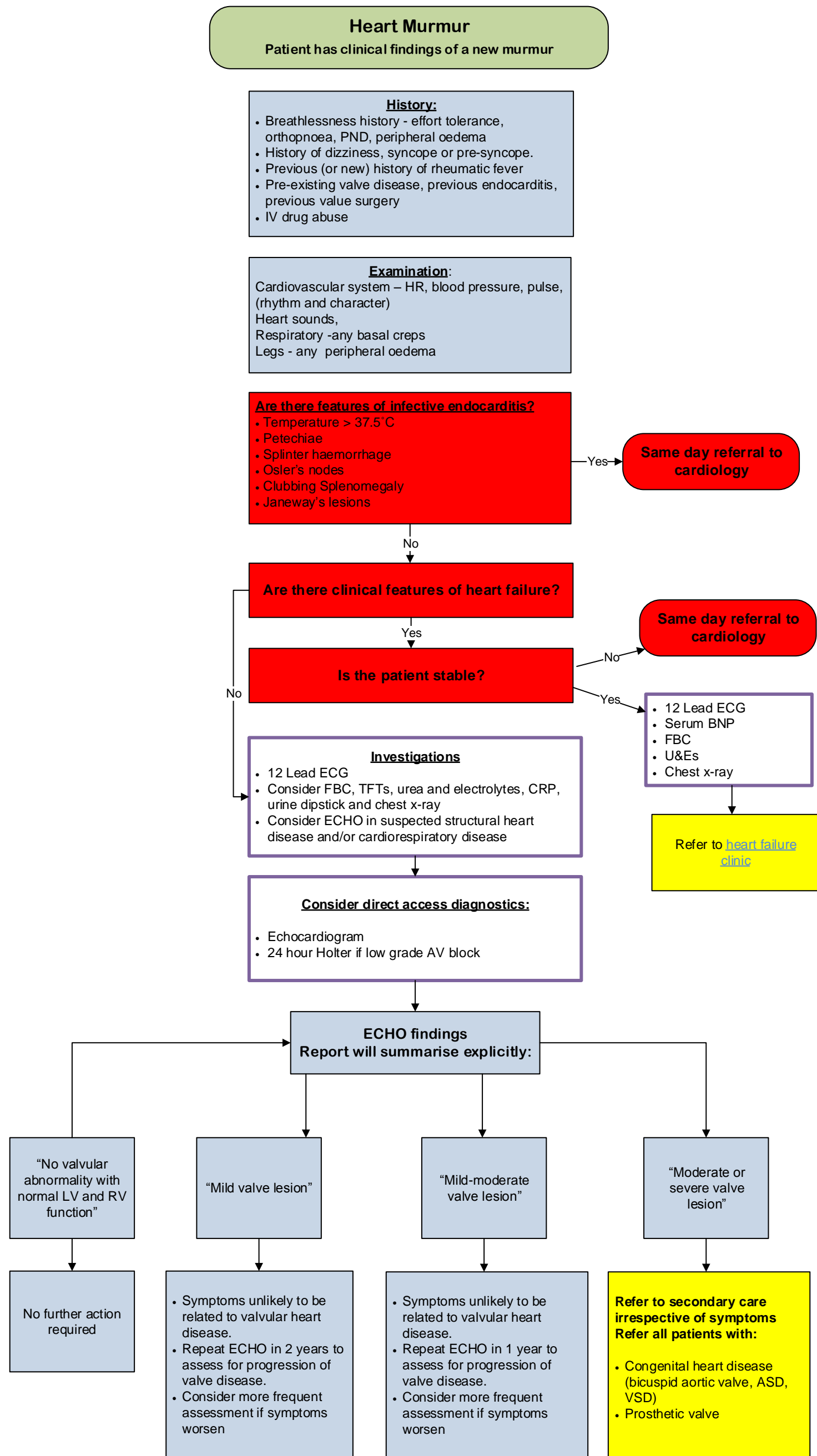


Heart Murmur Pathway

This pathway has been developed from published guidance, in collaboration with local cardiologists

This guidance is to assist GPs in decision making and is not intended to replace clinical judgment.



Comments & enquiries relating to medication:
CCCG Medicines Management Team
mmt.camdenccg@nhs.net

Clinical Contact for pathway queries:
Camden.pathways@nhs.net

Pathway created by NCL
Approved by Camden CCG Clinical
Cabinet + GB July 2016

Review due – March 2020