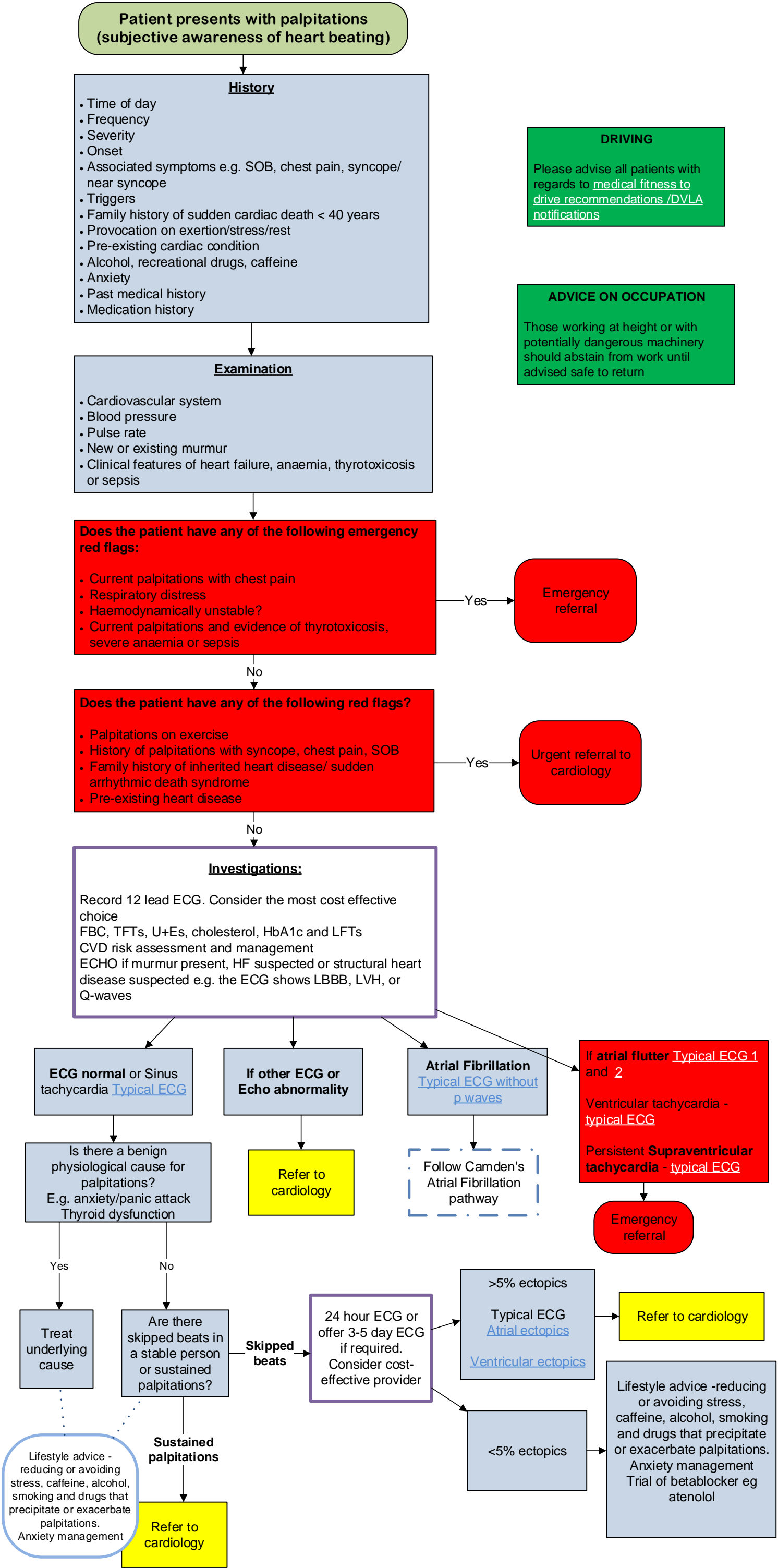


Adult Palpitations Pathway

This pathway has been developed from published guidance, in collaboration with local cardiologists.

This guidance is to assist GPs in decision making and is not intended to replace clinical judgment.



Reference  
<https://cks.nice.org.uk/palpitations>

Comments & enquiries relating to medication:  
CCCG Medicines Management Team [mmt.camdenccg@nhs.net](mailto:mmt.camdenccg@nhs.net)

Clinical Contact for pathway queries: [Camden.pathways@nhs.net](mailto:Camden.pathways@nhs.net)

Pathway created by NCL  
Approved by Clinical Cabinet Dec 2017

Review due Nov 2020